

#### ANNOUNCEMENTS AND REMINDERS:

- \*ALL PARTICIPANTS ARE AUTOMATICALLY MUTED.
- \*QUESTIONS FOR SPEAKERS SHOULD BE SHARED IN THE CHAT BOX.

\* THIS MEETING WILL BE RECORDED, THE RECORDING WILL BE AVAILABLE AT <https://www.firstup.org/sepecc/> BY END OF DAY.

# SEPECC Meeting

**Tuesday, October 25, 2022**

Meeting will begin at 9:00

## Agenda:

9:00 Welcome

9:05 Federal & State Updates

9:15 Advocacy

9:35 ELRC Announcements

9:55 SEPECC Special Presentation: Early Intervention with Lisa Parker

10:20 Community Partner Resources

10:40 Wrap Up

10:45-11:00 Breakout Groups (*Optional*)

Tyrone Scott,  
First Up

# Federal & State Updates



# Advocacy





**KEEP  
CALM  
AND  
GET OUT  
THE VOTE**



# Rock The Vote

Eleanor Levie, SEPECC Volunteer & Advocate



# ROCK THE VOTE!



**A fun craft activity  
for child care  
groups, pre-K  
classes, or families to  
do together**

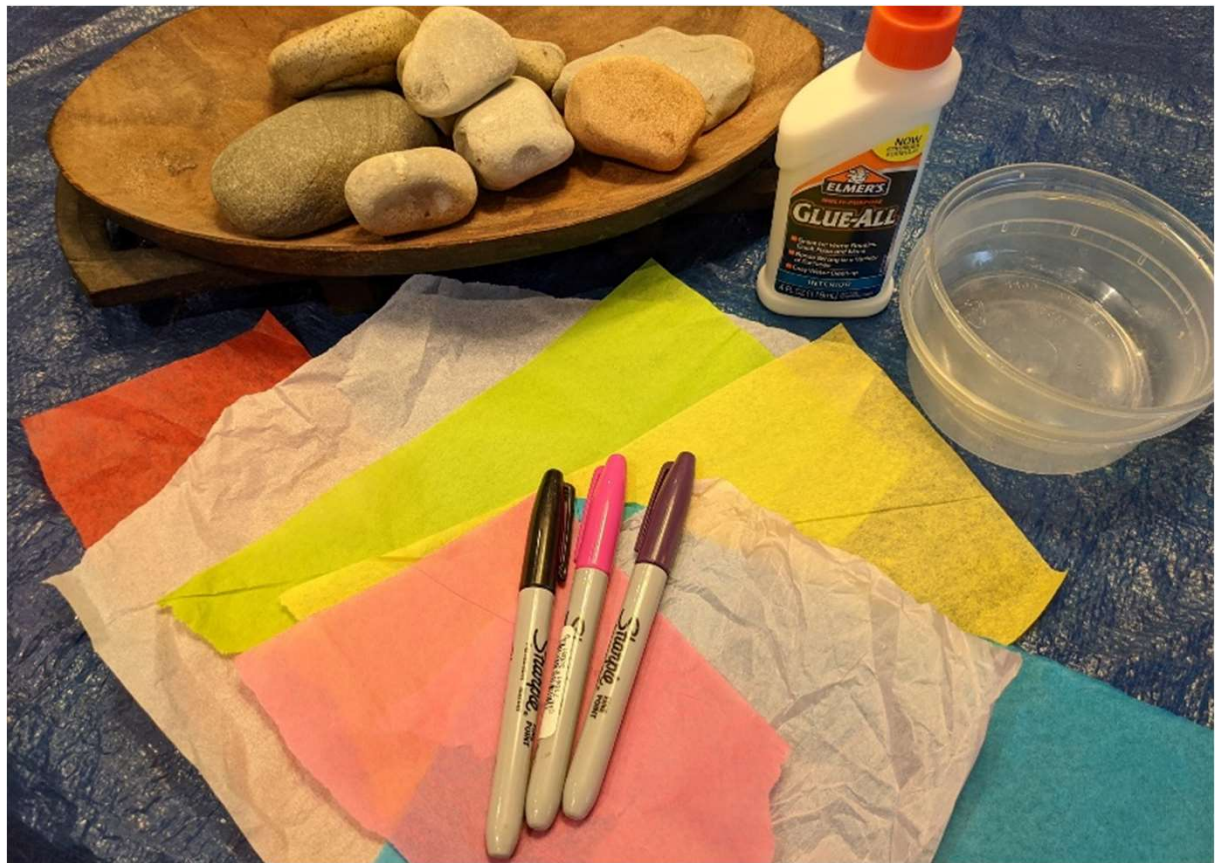
[Rock-craft.pdf](#)

**From Eleanor Levie,  
SEPECC volunteer  
advocate**



# ROCK THE VOTE!

What  
you'll  
need



# ROCK THE VOTE!





# ROCK THE VOTE!





# ROCK THE VOTE!



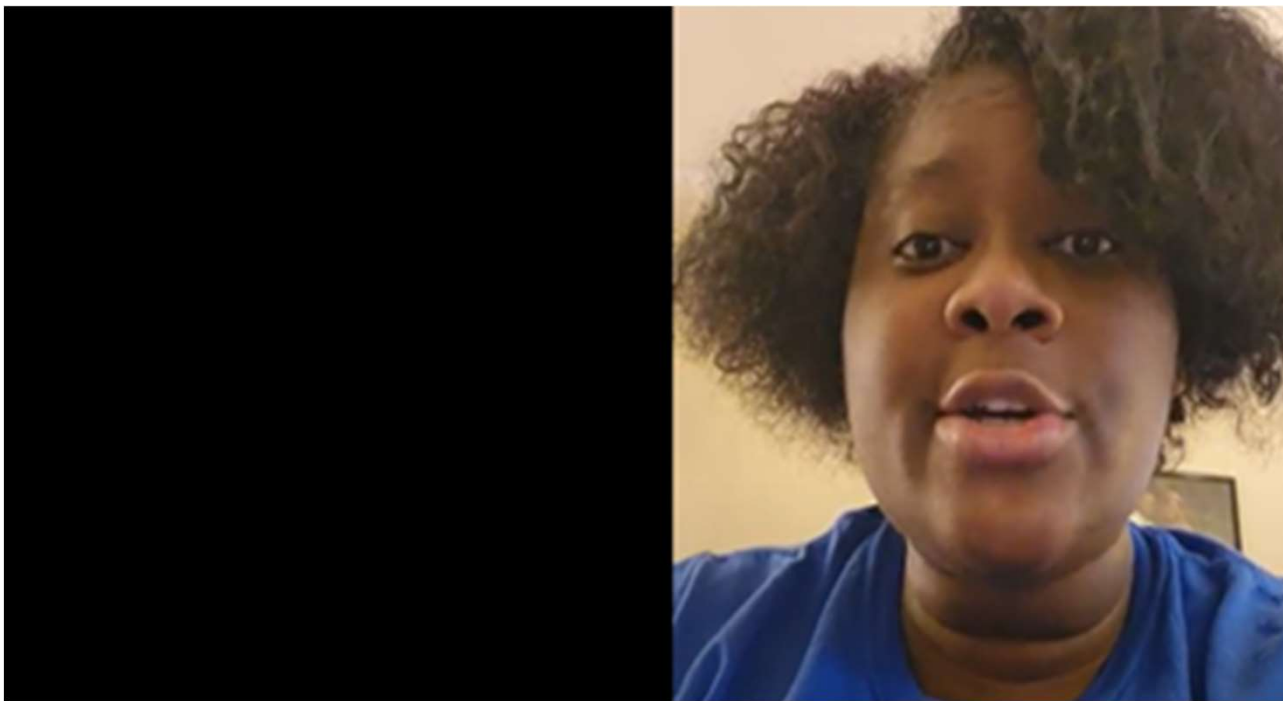
# ROCK THE VOTE!





# QUALITY ECE ROCKS!





Vote for Us.mp4

## **Laverne Cheeseboro, Heavenly Made Creation**

Vote for Us Video:

<https://drive.google.com/file/d/18CjSe90BjMplF97NXU9wzoI5ybteVA6e/view>



# PROVIDER SPOTLIGHT

Mercedes Fleet-Mount, Bright Little Scholars





---

# VOTING Q & A

Shawn Towey, PACCA



---

# CHILD CARE VOTER CAMPAIGN

Kyle McMillen, Children First



HOUSE  
DISTRICT  
**103**

HOUSE  
DISTRICT  
**104**

HOUSE  
DISTRICT  
**105**

HOUSE  
DISTRICT  
**106**

HOUSE  
DISTRICT  
**107**

HOUSE  
DISTRICT  
**108**

HOUSE  
DISTRICT  
**109**

HOUSE  
DISTRICT  
**110**

HOUSE  
DISTRICT  
**111**

HOUSE  
DISTRICT  
**112**

HOUSE  
DISTRICT  
**113**

HOUSE  
DISTRICT  
**114**

HOUSE  
DISTRICT  
**115**

HOUSE  
DISTRICT  
**116**

HOUSE  
DISTRICT  
**117**

HOUSE  
DISTRICT  
**118**

HOUSE  
DISTRICT  
**119**

HOUSE  
DISTRICT  
**120**

---

TAKE ACTION- Remind others to make a voting plan!





# **WHAT'S YOUR VOTING PLAN?**

**HOW?**

**WHEN?**

**WHERE?**

**#MAKEAVOTINGPLAN AND  
STICK TO IT**



---

# Updates from ELRCs

---

DIANE GETZINGER  
ASSISTANT DIRECTOR OF PROVIDER/STARS  
ELRC REGION 18, PHILADELPHIA COUNTY

[DGETZINGER@CARINGPEOPLEALLIANCE.ORG](mailto:DGETZINGER@CARINGPEOPLEALLIANCE.ORG)



# WORK FORCE SUPPORT GRANT 2.0

- Application period:  
October 24, 2022 through December 6, 2022
- Significant differences from WSG 1.0 due to **Act 54** -  
<https://www.dropbox.com/s/i7qsb5chqzylu19/2.%20%20Act%2054%20of%202022.pdf?dl=0>
- Instructions and Application: [www.pakeys.org](http://www.pakeys.org)
  - PHILADELPHIA PROVIDERS ONLY – apply online at <https://form.jotform.com/222849052509055>
- Limited funding available
- Providers placed on the first come, first serve list **only when application is complete and correct**
- No revisions, amended applications
  - Implications for providers currently hiring/onboarding new staff
  - Check application for completeness (all eligible staff) **before** submitting

## WFSG 2.0 – HIGHLIGHTS

Be sure to review complete application instructions at [www.pakeys.org](http://www.pakeys.org)

- Providers must have OCDEL Certificate of Compliance (regular or initial provisional) by **6/30/2022**
- Staff Retention Awards – must work on location at least 15 hours/week and be paid through payroll (with taxes withheld); **payout within 45 days** of receiving funds from ELRC
  - A) Staff - \$2,000 per person - **An employee who is responsible for direct supervision of child(ren) at the physical child care provider location and is included on the work schedule. No PD Registry requirement for grant application.**
  - B) Environmental Services Staff - \$1,000 per person - **An employee that provides services for children and families at the physical child care provider location; and is not identified on the list of staff who are not eligible.**

## WFSG 2.0 – HIGHLIGHTS (CONTD)

Be sure to review complete application instructions at [www.pakeys.org](http://www.pakeys.org)

Staff who are **NOT** eligible (for Group A OR Group B):

- Owners of center-based facilities – even those who also serve as directors or in any other job role at a physical CCC provider location;
- Executives;
- Administrators;
- Administrative support staff;
- Contracted staff (includes any staff that receives an Internal Revenue Services 1099 form; is not on the employer's payroll; and does not have state or federal taxes withheld from their paycheck);
- Volunteers;
- Staff who work less than 15 hours per week (on average) at the physical child care provider location; and
- Staff who do not work at the physical child care provider location identified on the grant application.

## WFSG 2.0 – HIGHLIGHTS (CONTD)

Be sure to review complete application instructions at [www.pakeys.org](http://www.pakeys.org)

### Center directors and FCCH/GCCH owner/operators:

- Eligible for Staff (Group A) bonus (\$2,000) if **on the schedule to provide direct supervision of children a minimum of 15 hours per week and provide (on average) a minimum of 15 hour per week of direct supervision of children**
- Otherwise Environmental Services Staff bonus (\$1,000) – assuming all other eligibility criteria is met

### Staff with multiple positions:

- If staff have multiple roles in both Staff and and Staff B, the provider should **include the staff in the group where the majority (50% or more) of their work time is spent.**

### Payroll Tax Assistance:

- The grant will again provide 7.65% to help offset employer payroll tax responsibilities

## WFSG 2.0 – HIGHLIGHTS (CONTD)

Be sure to review complete application instructions at [www.pakeys.org](http://www.pakeys.org)

### Staff Recruitment Funds:

- Can ONLY be used for expenses related to recruiting and hiring new staff.
- Cannot be used for expenses related to any existing staff.
- Expenses from 7/1/2022 through 6/30/2023
- Must be used within 90 calendar days of receiving payment from ELRC
- Examples of acceptable uses:
  - Sign-on bonuses, advertising staff vacancies, new employee benefit packages (such as, healthcare, paid time off, 401K), new employee criminal and child abuse clearances, staff training required for new employees, and staffing agency services.
- Examples of UNACCEPTABLE uses:
  - Unfunded payroll taxes, pay for existing staff expenses, support staff included in the Staff Retention request, pay for existing staff's employee benefit package costs.
- **IF YOU WILL NOT BE HIRING, DO NOT ACCEPT STAFF RECRUITMENT FUNDS (application question #7)**



**Asia M. Sheppard, MA** | Regional Director  
Departments of Human Services and Education  
Office of Child Development and Early Learning  
Southeast North Region Bureau of Certification  
801 Market Street Suite 5132 Philadelphia, PA 19107  
Phone: 215.560.3220 | Fax: 215-560-5139  
[assheppard@pa.gov](mailto:assheppard@pa.gov)

**Jamila Dashiell, PhD** | Regional Director  
Departments of Human Services and Education  
Office of Child Development and Early Learning  
Southeast South Region Bureau of Certification  
801 Market Street Suite 5132 | Philadelphia, PA 19107  
Phone: 215-560-5256 | Fax: 215-560-5139  
[jdashiell@pa.gov](mailto:jdashiell@pa.gov)





### **Announcement C-21-09**

Updated September 30, 2022, Reinstating and Extensions of Child Care Certification Regulation Suspensions Due to Act 73, Act 14 and Act 30

### **Announcement C-22-06**

Updated Health and Safety Pre-Service and One-Hour Training issued October 4, 2022

### **Announcement C-22-07**


Role of Department of Health (DOH) and Department of Human Services (DHS) in Ensuring Compliance with Immunization Regulation

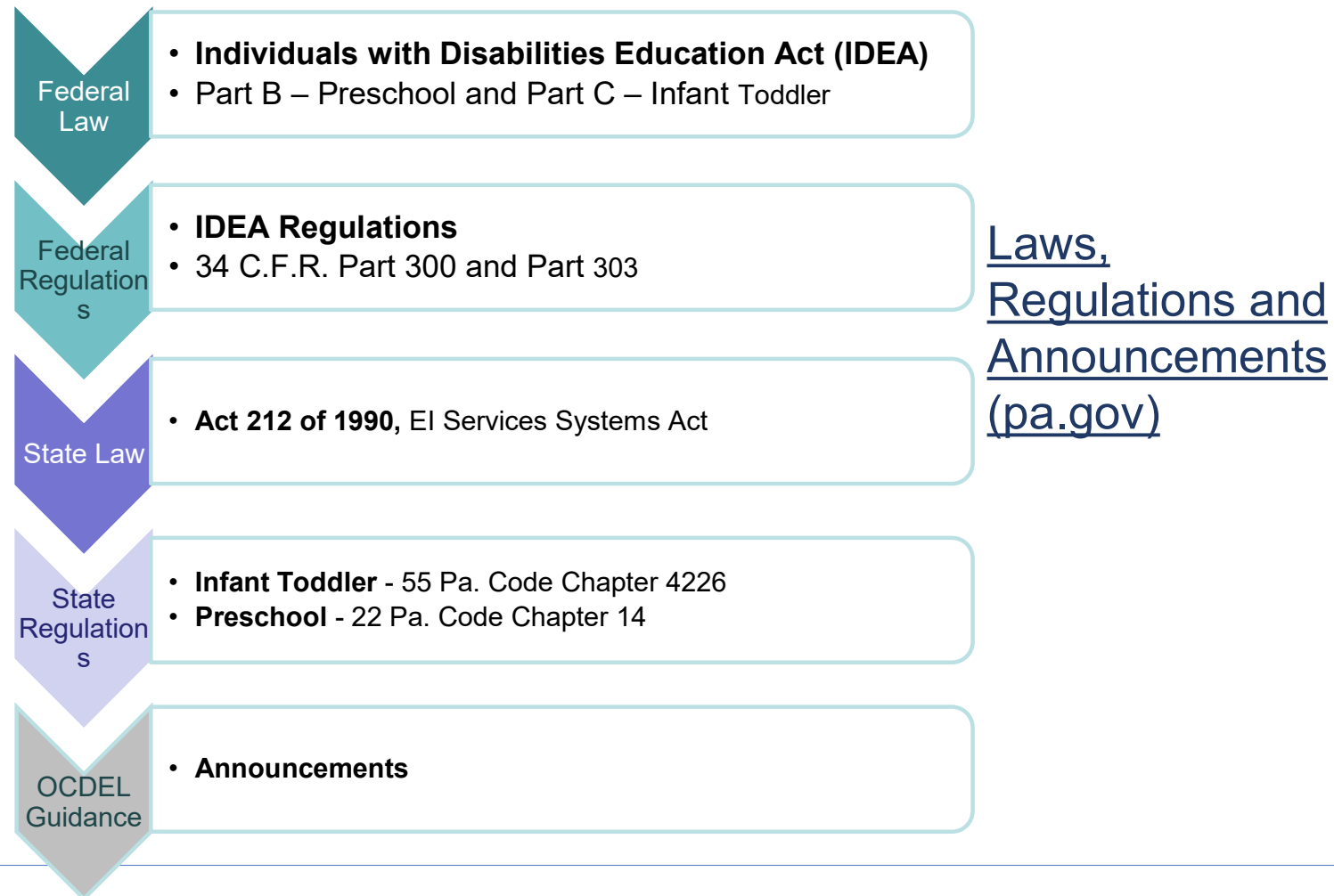


## Special Presentation: Early Intervention

Lisa Parker, Director

Bureau of Early Intervention Services and Family Supports  
Office of Child Development and Early Learning  
Departments of Education and Human Services





## Collaboration with Families

- Nothing about families without families;
- Recognizes the family as the child's first teacher;
- Addresses family priorities;
- Work with families to plan the evaluation and IFSP/IEP;
- Individualized supports and services to meet each child and family's needs;
- Primary role of EI is to coach and support families and ECE;
- Using Family Guided Routine Based Intervention;
- Families - Early Intervention Technical Assistance Online Learning Portal ([eita-pa.org](http://eita-pa.org))

# Problem Solving in Early Intervention

- Resolve at a local level with SC or EI Rep or Supervisor;
- Contact BEISFS/OCDEL at [ra-ocdintervention@pa.gov](mailto:ra-ocdintervention@pa.gov) or 717-346-9320 with concern;
- File a formal complaint with BEISFS/OCDEL;
- Contact ODR at <https://odr-pa.org> or 800-222-3353 for:
  - IFSP/IEP facilitation;
  - Mediation;
  - Due Process Hearing

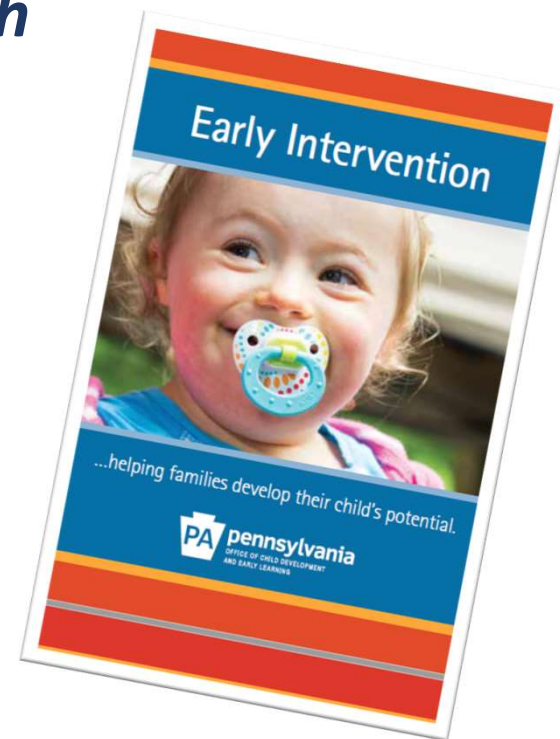
# CONNECT to Early Intervention

***CONNECT puts families in touch  
with the people who can help.***

**Call the CONNECT Helpline:**  
**1-800-692-7288**

**Email CONNECT:**  
**[help@connectpa.net](mailto:help@connectpa.net)**

**[Submit a form online](#)**





# Q&A Discussion and Thank You



# Problem Solving in Early Intervention

## First Steps in Problem Solving

Questions or concerns about Early Intervention (EI) programs and services should first be addressed by contacting your service coordinator (infant/toddler EI program) or your EI representative (preschool EI program). You are encouraged to meet with staff at your EI program as a first step in resolving concerns.

This is likely to result in a more timely resolution. Any change that results from the meeting will be documented on the Individualized Family Service Plan (IFSP) or Individualized Education Program (IEP). If you ask for a meeting to talk about your concerns, the meeting must be held within seven days of your request.

## What if parents still have concerns?

You have five choices available to you if concerns persist. Any of these choices may be used at any time.

**1) Contact the Bureau of Early Intervention Services**  
You may contact the Bureau of Early Intervention Services (BEIS) by calling 717-346-9320. BEIS can assist in resolving the concern before a more formal written complaint is filed.

A BEIS Advisor will contact your child's EI program to determine if there can be an immediate resolution. If no immediate resolution is available, you can file a written complaint.

**2) File a Written Complaint**

You may file a written complaint to resolve concerns if you believe the EI program hasn't followed proper steps in the EI process.

BEIS will investigate the complaint within 60 days.

If a concern is identified, a plan of correction will be developed within 30 days after the investigation.

**3) IFSP/IEP Facilitation**

You may ask for IFSP/IEP facilitation, a voluntary process that can be used when parents and EI staff agree that a neutral person would help to achieve a successful IFSP/IEP meeting. This is a less formal way to resolve disagreements than more formal proceedings such as due process. You can get more information from your service coordinator or preschool EI representative or by contacting the Office for Dispute Resolution at 1-800-222-3353 or [www.odr-pa.org](http://www.odr-pa.org).

**4) Mediation**

You may use mediation when there is a disagreement about a child's evaluation or services on the IFSP/IEP, such as the choice of a service, how often a service is provided, or where a service takes place. In mediation, everyone agrees to work together with a mediator, a person trained to help resolve concerns without taking sides. Mediators don't make "decisions," but help parties come to an agreement. Mediation is offered at no cost, is informal, and happens quickly.

**You can get more information about mediation by contacting the Office for Dispute Resolution (ODR) at [www.odr-pa.org](http://www.odr-pa.org) or 1-800-222-3353.**

**5) Due Process Hearing**

You may request a due process hearing, a more formal process for resolving disagreements about EI services, such as the choice of a service, how often a service is provided, or where a service takes place. These are formal hearings at which all sides can present witnesses, including experts.

There are some differences in due process for families with infants and toddlers, and those with preschool age children.

**Parents with infants and toddlers under three years of age**

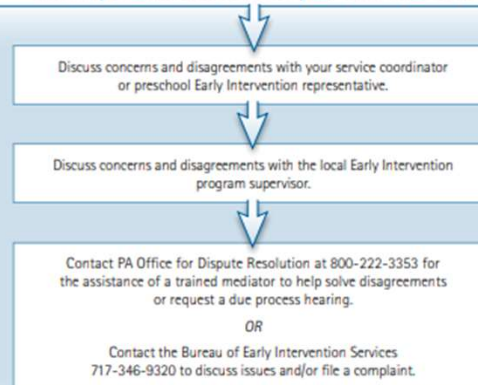
You may request a hearing and the hearing officer will set a date and send a notice to you. If there is a problem with the date, the hearing can be rescheduled. The hearing must be held, and a decision reached, within 30 days.

**Parents with preschool children three to five years of age**

If you request a hearing, you and your preschool EI representative will be required to meet before a hearing takes place to resolve disagreements at the local level through a resolution meeting. Both parties can agree to waive the resolution meeting in writing or they may agree to try mediation. If the preschool program does not hold a local resolution meeting within 15 calendar days, you may ask the hearing officer to move forward with the due process hearing. The hearing must be held, and a decision reached within 45 days. **For more information on due process hearings, you can contact your preschool EI representative or call the Office for Dispute Resolution (ODR) at 1-800-222-3353 or visit [www.odr-pa.org](http://www.odr-pa.org).**

\*An EI representative could be your EI teacher, therapist, or service coordinator.

**What can you do if you are not satisfied with  
the Early Intervention services your child receives?**



**Questions about problem solving in Early Intervention?**

Call 717-346-9320 or Email the Bureau of Early Intervention Services at [RA-ocdintervention@pa.gov](mailto:RA-ocdintervention@pa.gov)



## REGULATION FROM PA CODE 3270.17

### **3270.17. Service to a child with special needs.**

- (a) The operator shall make reasonable accommodation to include a child with special needs in accordance with applicable Federal and State laws.
- (b) The operator shall permit an adult individual who provides specialized services to a child with special needs to provide those services on the facility premises as specified in the child's IEP, IFSP or written behavioral plan.
- (c) The operator shall make staff persons and parents aware of community resources for the family of a child who may have special needs. The Department will provide to the operator information regarding community resources.

### **Authority**

The provisions of this § 3270.17 amended under Articles IX and X of the Human Services Code (62 P.S. §§ 901—922 and 1001—1087).





Save-the-Date to Join SEPECC for a PQAS PD Training

**Planning and Implementing: A Director's Tool for  
Early Intervention**

**December 8, 2022  
1:00 – 3:00pm**



together with



# Shaping the Future of Montessori Education



Friday  
**NOV 12 2022**  
**9:00am-2pm**  
**VIRTUAL**



We Are Committed to  
Supporting Traditional and  
Montessori Early learning  
Educators • Presentations  
on relevant topics  
connected to education •  
Discussion and  
collaboration sessions  
Building your professional  
network of support

Mini Montessori Academy, along with BDCI Philadelphia & Vicinity is offering this special event to meet the needs of all Early Childhood Educators, Public and Private Montessori Stakeholders. This conference offers the opportunity to participate in an affordable, LIVE/IN-PERSON on-site training with exceptional speakers close to home.

**Pre-Conference Intensive, AMS, NAFCC, NAEYC Accreditation**



Mini Montessori  
Academy  
Building the Connections



TO REGISTER: <https://forms.gle/7LxtrWHBnPadu2u87>

---

## COMMUNITY PARTNERS

Sonia Stamm  
Stamm Consultancy

Brandi Carpenter  
PHMC

Ashley Haneiko and Elora Webb  
First Up

Sonia Stamm  
[sonia@stammconsultancy.com](mailto:sonia@stammconsultancy.com)

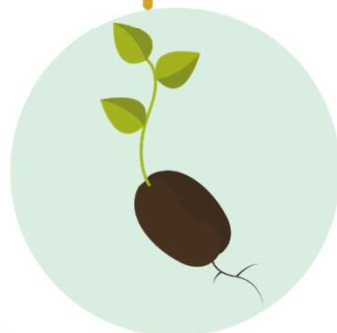
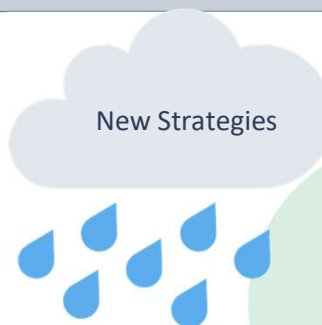
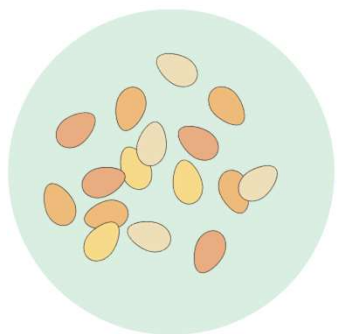


## FLOURISHING TOGETHER

A First Up Initiative

Your path to becoming a trauma-informed educator begins here!

These seeds of knowledge must be planted and nurtured to grow into effective trauma-informed care practices.

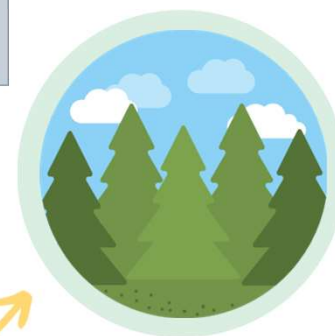


Participants can grow their trauma-informed care practices by gaining new strategies



With ongoing professional learning and peer support such as:

- PREPSS
- Teacher Wellness
- Trauma-Informed Organizational Coaching
- Community of Practice



As ECE professionals become more trauma-informed, the ECE field will thrive with them.

Children, families, and ECE professionals will flourish together.

# COMMUNITY OF PRACTICE

- WHAT: an organized group of people who share a common concern/passion in a specific domain – in this case, trauma-informed ECE
- WHO: those with dual interest in trauma informed care and early childhood education
- WHY: to collaborate regularly to share information, enhance knowledge/skills, and actively work on advancing trauma-informed ECE

# COMMUNITY OF PRACTICE

- WHEN: Tuesday, December 13, 1-2:30 pm (via Zoom) - also March 14 and June 6
- HOW: Contact James Nicholson, M.Ed.,  
Senior Early Learning Specialist and Project Lead Flourishing Together  
267-934-4158  
[James.Nicholson@firstup.org](mailto:James.Nicholson@firstup.org)
- Register Here: <https://us06web.zoom.us/j/86919975591?pwd=MmJ0b0JndVl6c2lyNWY4bUFhOVlmUT09>



---

BRANDI CARPENTER, PHMC  
ECEFACILITYFUND@PHMC.ORG

# CITY OF PHILADELPHIA: CHILD CARE FACILITIES FUND

## About US

- The mission of the CCFF is to support high-quality ECE providers located in Philadelphia for the maintenance and improvement of their facilities to maintain a high-level STAR rating
- Providers may apply for a grant funding for minor to mid-level renovations and/or the purchase and installation of large appliances

# CITY OF PHILADELPHIA: CHILD CARE FACILITIES FUND (CCFF)

## Who is Eligible?

- STAR 3 and 4 Center, Group and Family Child Care providers operating in Philadelphia
- STAR 2 facilities based on participation in quality improvement activities and the ability to meet other eligibility criteria

## Funding Limits

- **\$25,000** for Commercial Center and Group Facilities
- **\$12,500** for Residential Family and Group Facilities

# CITY OF PHILADELPHIA: CHILD CARE FACILITIES FUND (CCFF)

## How to Start Planning?

- Visit our website at [www.philafacilityfund.org](http://www.philafacilityfund.org)
- Identify necessary facility improvements at your site
- View recording of the **virtual kick-off** to meet project staff and learn more about this opportunity
- Review important dates

## Important Dates:

- **October 10, 2022** : The CCFF application and supporting materials will be available on our website: [www.philafacilityfund.org](http://www.philafacilityfund.org)
  - TA available Mondays, Wednesdays, and Thursdays throughout the application period.
- **November 18, 2022**: Application deadline
- **January 5, 2023**: Provider Notification

For questions, please email us the CCFF at  
[ECEFacilityFund@phmc.org](mailto:ECEFacilityFund@phmc.org)



Ashley Haneiko  
[ashley.haneiko@firstup.org](mailto:ashley.haneiko@firstup.org)

Elora Webb  
[VISTA@firstup.org](mailto:VISTA@firstup.org)



## Polling Questions - Results

What is currently your biggest challenge as a provider?

- Staffing shortage - 22
- Financial concern - 11
- Needs of children/families - 5
- Burnout/stress - 3
- Other - 2
- Building/facility issues - 1
- Neighborhood/community safety - 0
- Access to needed resources/supports - 0

What is your second greatest challenge as a provider?

- Burnout/stress - 12
- Staffing shortage - 9
- Financial concern - 8
- Neighborhood/community safety - 6
- Needs of children/families - 4
- Access to needed resources/supports - 3
- Building/facility issues - 1
- Other - 1

Would you be interested in sharing your story? Interview - 4 Focus Group - 3 Both - 8 No, thank you - 13

- 
- **1-Minute Exit Survey** to provide feedback on the effectiveness of today's meeting:  
<https://forms.gle/mNpfFjdQFkuymygm7>
  - **Upcoming Meetings: Nov. 15 & Dec. 20**
  - **Meeting Materials & Registration Links:**  
<https://www.firstup.org/sepecc/>
  - **First Up Newsletter:** <https://www.firstup.org>  
(Scroll to bottom of home page to subscribe)

MEETING WRAP UP



Advancing quality early care  
and education in Bucks, Chester,  
Delaware, Montgomery and  
Philadelphia Counties

## 2022 SEPECC COMMITTEE VOLUNTEERS

### **Steering Committee**

Unis Bey  
Zakiyyah Boone (Co-Chair)  
Laverne Cheeseboro  
Latonta Godboldt  
Mary Graham  
Jackie Groetsch  
Kim Heuschkel  
Shineal Hunter  
Jacki Jay (Co-Chair)  
Kellie Ketchum-Umphrey (Alt. Co-Chair)  
Sharon McClafferty  
Minette Taylor  
Shawn Towey

### **Advocacy Workgroup**

Damaris Alvarado  
Dionne Chambers  
Laverne Cheeseboro  
Shirlee Howe  
Eleanor Levie  
Elizabeth Ozer  
Maureen Quinn Yamamoto  
Shawn Towey  
Robyn Younger

### **Advisory Council**

Stephanie Blake  
Norma Finkelstein  
Diane Getzinger  
Pamela Haines  
MaryKay Mahar  
Maddy Malis  
Elizabeth Ozer  
Khadijah Sabir

Sept. 2022



## BREAKOUT ROOMS

We will break out into randomly assigned small groups for all who wish to join.