

ANNOUNCEMENTS AND REMINDERS:

- * ALL PARTICIPANTS ARE AUTOMATICALLY MUTED.
- * PLEASE SHARE YOUR QUESTIONS FOR SPEAKERS IN THE CHAT BOX.
- * THIS MEETING WILL BE RECORDED & AVAILABLE AT: <https://www.firstup.org/sepecc/>



SEPECC Meeting

Tuesday, May 19, 2026



Meeting will begin at 12:30pm

Agenda:

- 12:30 Welcome
- 12:40 Federal, State & Local Budget/Policy Updates
- 12:55 ECE Advocacy in Action
- 1:20 Special Presentation with Dr. Kim Rode, Director of Bureau of Early Intervention Services & Family Support
- 1:45 Community Partner Resources
- 1:55 OCDEL, DHS & ELRC Announcements
- 2:20 Wrap Up

The right to communicate in the language you feel most connected with- the language of your heart.



El derecho a expresarse en el idioma con el que se sientan más cómodos y conectados: el idioma de su corazón.

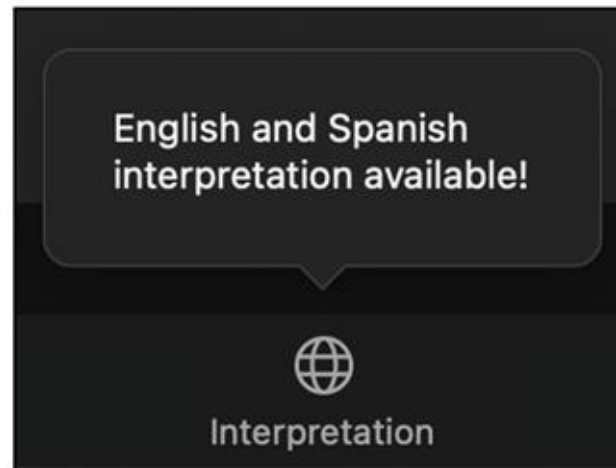
We will be using interpretation as a tool for opening communication



Usaremos la interpretación como una herramienta para expandir la comunicación.

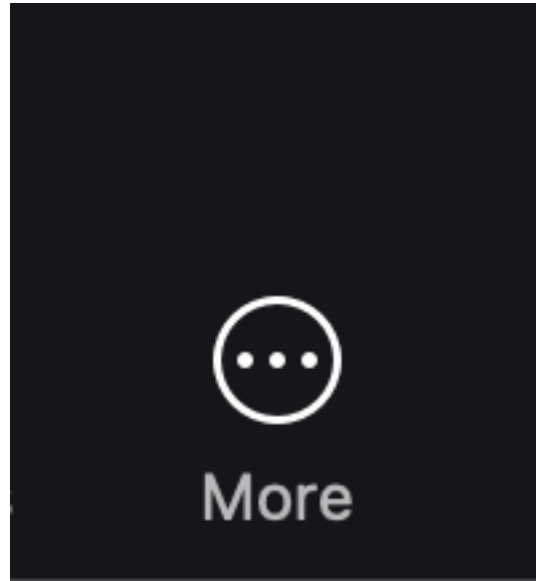
Zoom Interpretation/ Interpretación por Zoom

- Join the meeting using the Zoom app (not a web browser, if possible).
- In your meeting/webinar controls, click Interpretation.
- Click the language that you would like to hear.
- (Optional) To only hear the interpreted language, click Mute Original Audio



- Únase a la reunión usando la aplicación de Zoom (no desde un navegador web, si es posible).
- En los controles de la reunión o seminario web, haga clic en Interpretación. Haga clic en el idioma que desea escuchar.
(Opcional) Para escuchar solo el idioma interpretado, haga clic en Silenciar audio original.

- If you don't see the globe icon, click the three dots labeled More. In the bottom right corner, tap More (three dots) and select Interpretation



- Si no ve el ícono del globo, haga clic en los tres puntos que dicen Más.
- En la esquina inferior derecha, toque Más (tres puntos) y seleccione Interpretación.

SEPECC OBJECTIVES & PQAS

Sign in Sheet for SEPECC Meeting-
PQAS Credit



Sign in Sheet for SEPECC Meeting- PQAS Credit

Thank you for joining the SEPECC Meeting. If you have attended the meeting and would like to receive PQAS credit, please fill out the information. Your credit will be on your PD Registry transcript. If you have any questions, please contact Nancy at pdmanager@firstup.org. Please fill out this survey within 24 hours of the end of the meeting. If you do not need PQAS credit, please do not fill out this form.

* Required

1. First and Last Name as it is on the PD Registry *
Enter your answer
2. Email that links to your PD Registry account *
Enter your answer
3. PD Registry Number
Enter your answer
4. Please comment if you have any questions or feedback.

OBJECTIVES

- NAEYC standard 6a- Identify as a committed professional in the early childhood education field.
- NAEYC standard 8b- Describe supports and resources to develop highly effective staff.

Please complete sign in

within 24 hours of the meeting end if you would like to receive PQAS credit.

Scan QR code or click on link:

<https://forms.office.com/r/RfzSg97k7j>



ARIANNA R.

**APRIL
FIRST TIME
ATTENDEE
WINNER!**

Drop "**NEW**" in the chat if this is your **FIRST** SEPECC meeting and
Want to enter in the draw for next month..

BUDGET & POLICY UPDATES

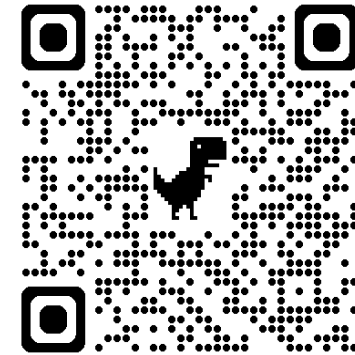
- FEDERAL -

MARY GRAHAM,
CHILDREN'S VILLAGE



Supporting Early Childhood Educators' Deductions (SEED) Act

Once enacted, it will allow early childhood educators to deduct up to \$350 in out-of-pocket classroom supply expenses when filing their tax returns.



Tell Lawmakers: Affordability and Child Care are Priority #1
Take Action - First Five Action

CCDF Final Rule (May 12, 2026)

Overview

- The Administration released the final rule *“Restoring Flexibility in the Child Care and Development Fund (CCDF)”*
- The rule rescinds protections intended to improve payment practices for providers and support equitable access for families relying on subsidies
- Effective date: July 13, 2026

It rescinds key 2024 requirements, including:

- 7% copay cap
- Paying providers based on enrollment
- Prospective (advance) payments
- Required grants/contracts for underserved populations

Learn more:

- [Federal Register: CCDF Final Rule](#)
- [NAEYC Statement on 2026 CCDF Final Rule](#)

BUDGET & POLICY UPDATES

- STATE -

TYRONE SCOTT, FIRST UP

First Up



Champions for Early Education

PRE-K
FOR PA
READY TO SUCCEED



START
STRONG
PA

Tell PA Legislators that continued investments must be made in order to solve the historic staffing crisis in the early care and education workforce!

SIGN THE PETITION
asking the General Assembly to prioritize
investments that build on previous years' budgets.



<https://startstrongpa.org/take-action>

BUDGET & POLICY UPDATES

- STATE -

TYRONE SCOTT, FIRST UP

First Up



Champions for Early Education



children first
ACTION FUND

Tell Your State Senator: Help Solve Pennsylvania's Child Care Crisis

Families across Pennsylvania are struggling to find and afford child care, while programs face severe staffing shortages — leaving 25,000+ children without care.

We're calling on lawmakers to support key investments in Governor Shapiro's budget, including funding for child care workforce recruitment, Head Start, and Pre-K Counts.

But more action is needed. Lawmakers must also expand access to affordable care and ensure programs can support children with special needs.

Take action today. Send your state senator the below email asking them to help solve the child care crisis. You can customize the letter for added impact.

Tell Your State Senator: Help Solve Pennsylvania's Child Care Crisis

TOMORROW

**BUDGET &
POLICY UPDATES**

- STATE -

**TYRONE SCOTT,
FIRST UP**

First Up



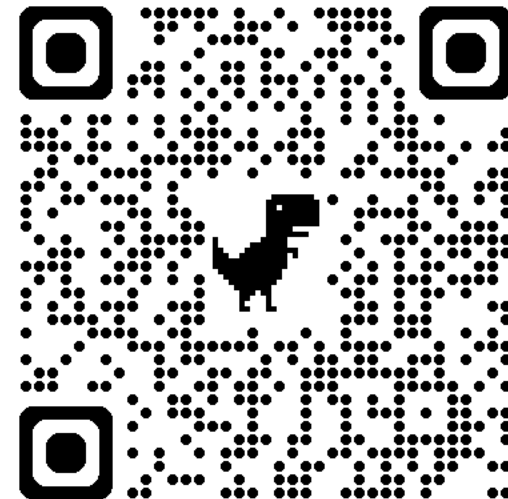
Champions for Early Education

Join us!
**Working Together
Webinar**

May 20, 2026

10:00 a.m., Via Zoom

Registration Required



Register NOW!



**START
STRONG
PA**

Child Care Crisis April 2026 Survey Results

Pennsylvania Respondents—1,141 Child Care Programs*

2,621

unfilled staff positions

21,917

additional children could
be served if those program
were fully staffed

When families can't find child care, they can't work.

78%

reported teacher
shortages

87%

reported challenges
recruiting teachers

68%

reported challenges
retaining teachers

The child care staffing shortage is driven by low wages. Wages are SO LOW that they FAIL to meet the cost of living in EVERY county in Pennsylvania.

The General Assembly and Administration must act now and invest in a child care recruitment and retention initiative to prevent more classrooms from closing and further limiting availability for working families in need of care.

* The 1,141 child care programs responding equals 17.4% of the open, certified programs in April 2026 with 62 of the 67 PA counties represented.

UPDATES

- LOCAL -

LESLIE SPINA,
KINDER ACADEMY &
VOICE OF ECE

**Philadelphia
Early Childhood
Education
Special Committee**

Convened on May 11, 2026

WE WANT TO HEAR FROM PHILADELPHIA ECE LEADERS

What do you think should be the top priority for Philadelphia's new Early Childhood Education (ECE) Taskforce? (*Select up to three*)

- Tax relief and reductions for child care businesses
- Increased wages and improved benefits for the workforce
- Workforce development supports
- Support with insurance costs, premiums, and coverage
- Expanded Early Intervention (EI) services and supports for children with challenging behaviors



ADVOCACY IN ACTION!

PROVIDER SPOTLIGHT

**BERNADETTE
RODRIGO,**
CHILDREN'S VILLAGE
AT DOYLESTOWN
HEALTH



GOVERNOR JOSH SHAPIRO

May 8, 2026

Greetings:

It is my pleasure to recognize May 8, 2026, as Child Care Provider Appreciation Day.

Child care providers are essential to the health of our Commonwealth by fostering welcoming spaces, supporting parents and families, and creating positive, enriching environments where children can develop lifelong skills. They are the workforce behind the workforce, offering a lifeline for families and communities – making it vital that we invest in our child care providers for the current and future benefit of both our children and the economy. When our Commonwealth supports affordable and accessible high-quality child care, we are committing to helping families, supporting children's healthy development and learning, and keeping our economy growing.

As Governor, and on behalf of all Pennsylvanians, I am honored to recognize May 8, 2026, as Child Care Provider Appreciation Day. I encourage all Pennsylvanians to acknowledge the critical role child care providers play in supporting our children and Commonwealth.



GIVEN under my hand and the Seal of the Governor, at the City of Harrisburg, this eighth day of May two thousand twenty-six, the year of the Commonwealth the two hundred fiftieth.

Governor Josh Shapiro

- May 8, 2026 -
Child Care Provider Appreciation Day!

E.C.E. LATINOS CARAVAN TO HARRISBURG

MAY 6, 2026

ROSANNA MATOS,
FIRST UP

First Up



Champions for Early Education





MEETING WITH PA LEGISLATIVE LATINO CAUCUS

PARTNERSHIP OF LEJ & FIRST UP



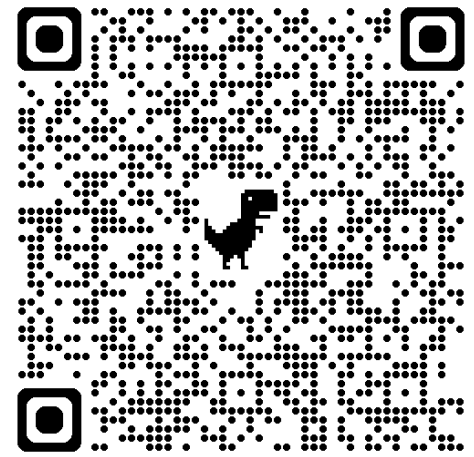


Hearing with
PA House
Labor & Industry
Committee

Partnership of
KenCrest & First Up



INTERESTED IN
ADVOCATING IN
HARRISBURG?
SCAN THIS QR
CODE



DAY WITHOUT CHILD CARE

MERCEDES FLEET-
MOUNT

DIRECTOR/OWNER
BRIGHT LITTLE SCHOLARS

SHINEAL HUNTER

DIRECTOR
FAMILY CIRCLE ACADEMY



DWOCC 2026 RECAP

REMIX WITH VIDEO FROM
COUNCIL PRESIDENT KENYATTA
JOHNSON'S SOCIAL MEDIA

PHOTOS PROVIDED BY ELEANOR
LEVIE, SEPECC VOLUNTEER





DWOCC IN CITY HALL





**NETWORKING LUNCH
& VIRTUAL RALLY
AT FIRST UP OFFICE**

**SAVE
THE
DATE**

**DAY WITHOUT
CHILDCARE
2027**

MAY 10

**Drop name in the chat if you
would like to learn more!**



children first
ACTION FUND

KEVIN BURGESS

CHILDREN FIRST ACTION FUND &
CHILD CARE VOTER

KEVINB@CHILDRENFIRSTPA.ORG

(445) 888-2542


2026 PRIMARY ELECTION DAY!

- **TODAY IS ELECTION DAY!**
 - Polls open 7am-8pm
 - Mail-in ballots must be returned by 8pm
- Find polling place or ballot drop box at www.vote.pa
- **Philly voters**
 - Important Ballot Question – Making Office of Youth Ombudsperson Permanent
 - Vote YES to protect kids!
- **Voter Hotline**
 - English: 1-866-687-8683
 - Spanish: 1-888-839-8682
 - Other Languages: 1-888-274-8683

The Philadelphia Inquirer

“Pennsylvania **failed to protect boys from abuse at Glen Mills and other state-licensed juvenile programs.”**

PROTECT KIDS
FROM ABUSE AND NEGLECT.

 **VOTE YES**
ON BALLOT QUESTION #2
ON TUESDAY, MAY 19



ADVOCACY
BELONGS TO
ALL OF US!

SIM LOH,
FIRST UP & SEPECC



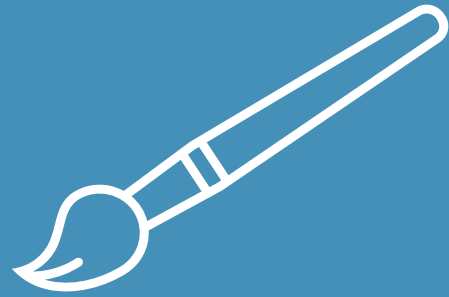


**NO ONE CAN DO
EVERYTHING, BUT
EVERYONE CAN DO
SOMETHING!**

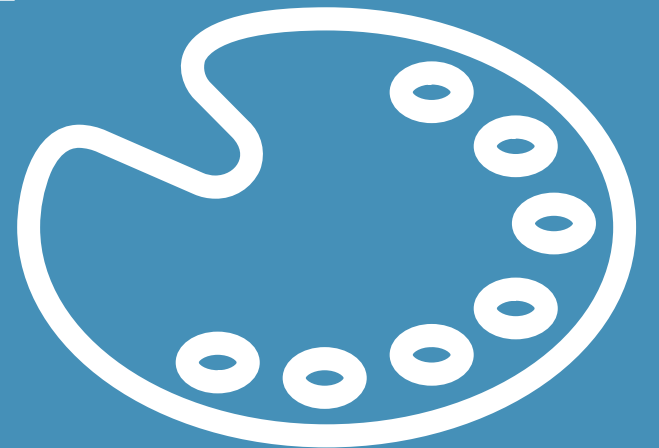
**WHAT IS YOUR
SOMETHING?**

LEGISLATIVE ENGAGEMENT





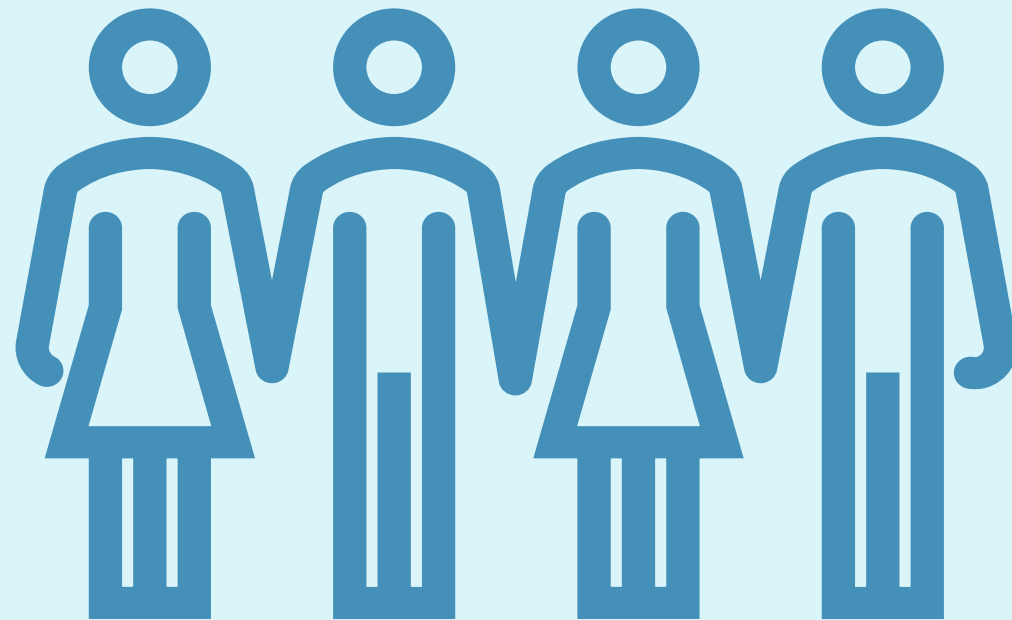
VISUAL REMINDER CHILDREN ARTWORK



SOCIAL MEDIA/ LETTER TO THE EDITOR



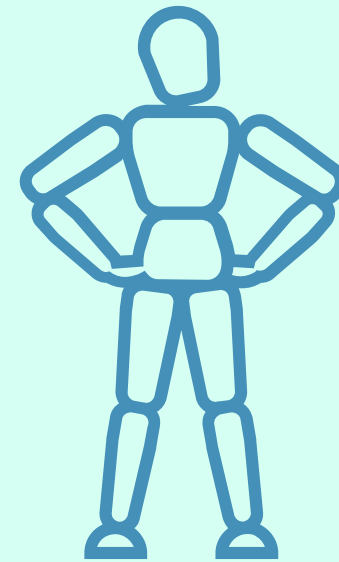
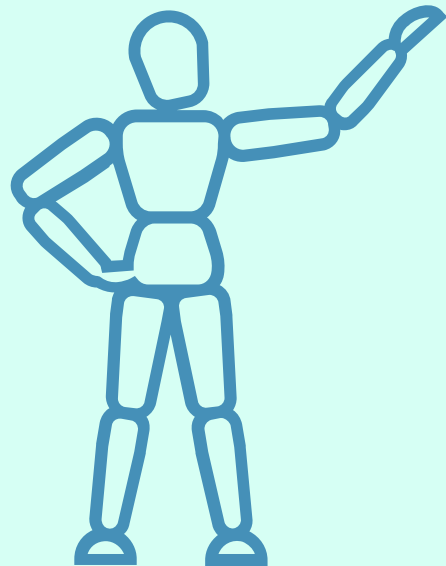
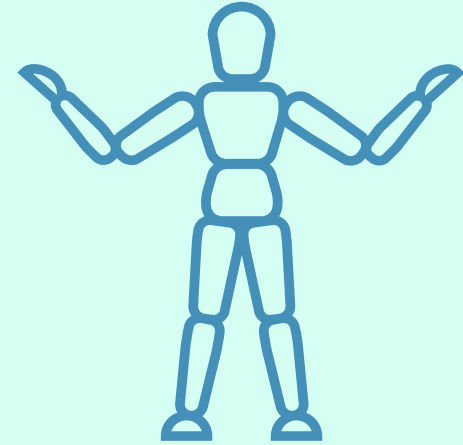
COMMUNITY & FAMILY ENGAGEMENT



ORGANIZE

&

MOBILIZE



THINK ABOUT IT...



NO ONE PERSON CAN
CARRY THE MOVEMENT
ALONE.
BUT WHEN EACH OF US
BRINGS OUR
'SOMETHING,'
TOGETHER WE BECOME
UNSTOPPABLE.



SPECIAL PRESENTATION: EARLY INTERVENTION

PART 2

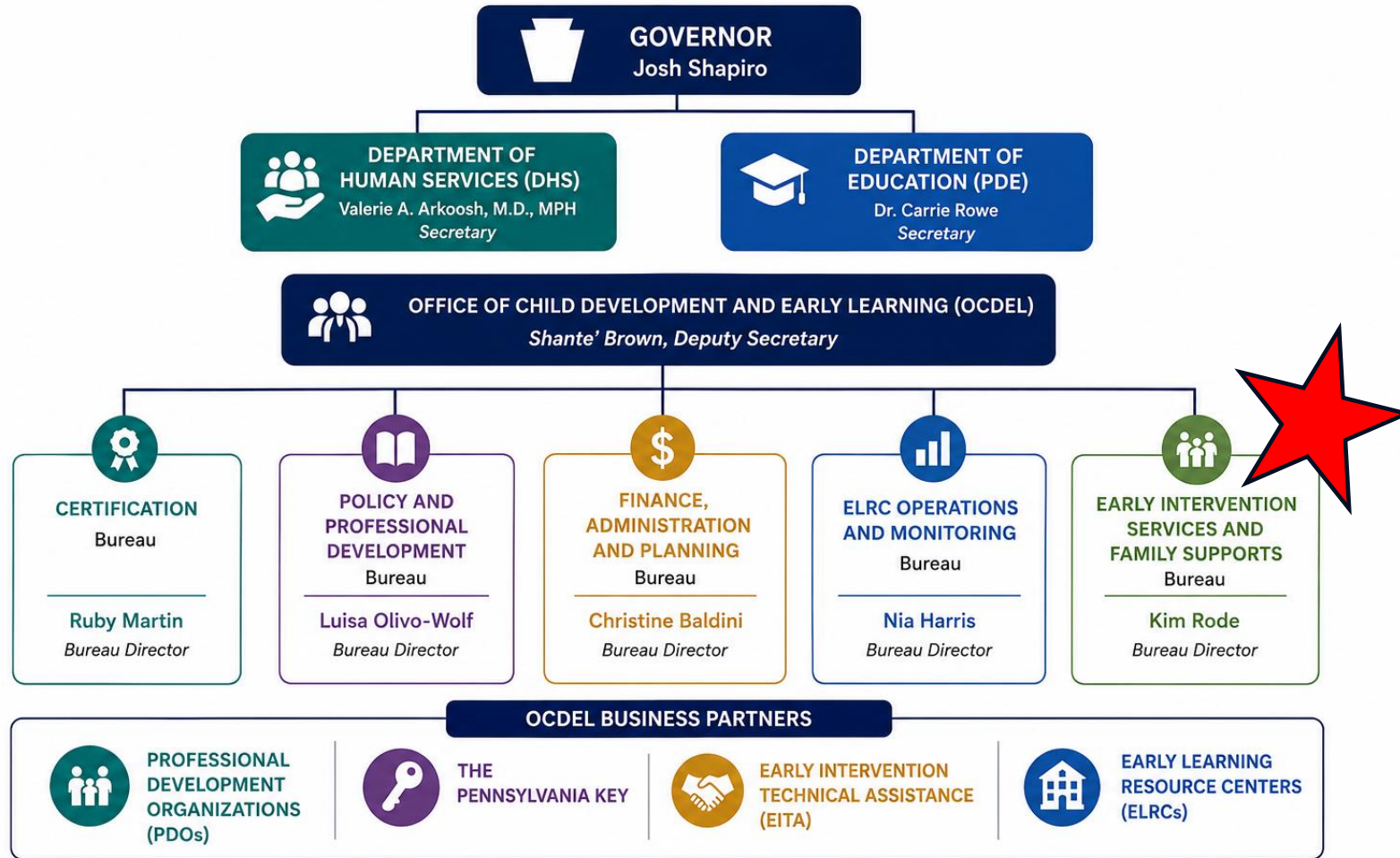




Pennsylvania
**Office of Child Development
and Early Learning**

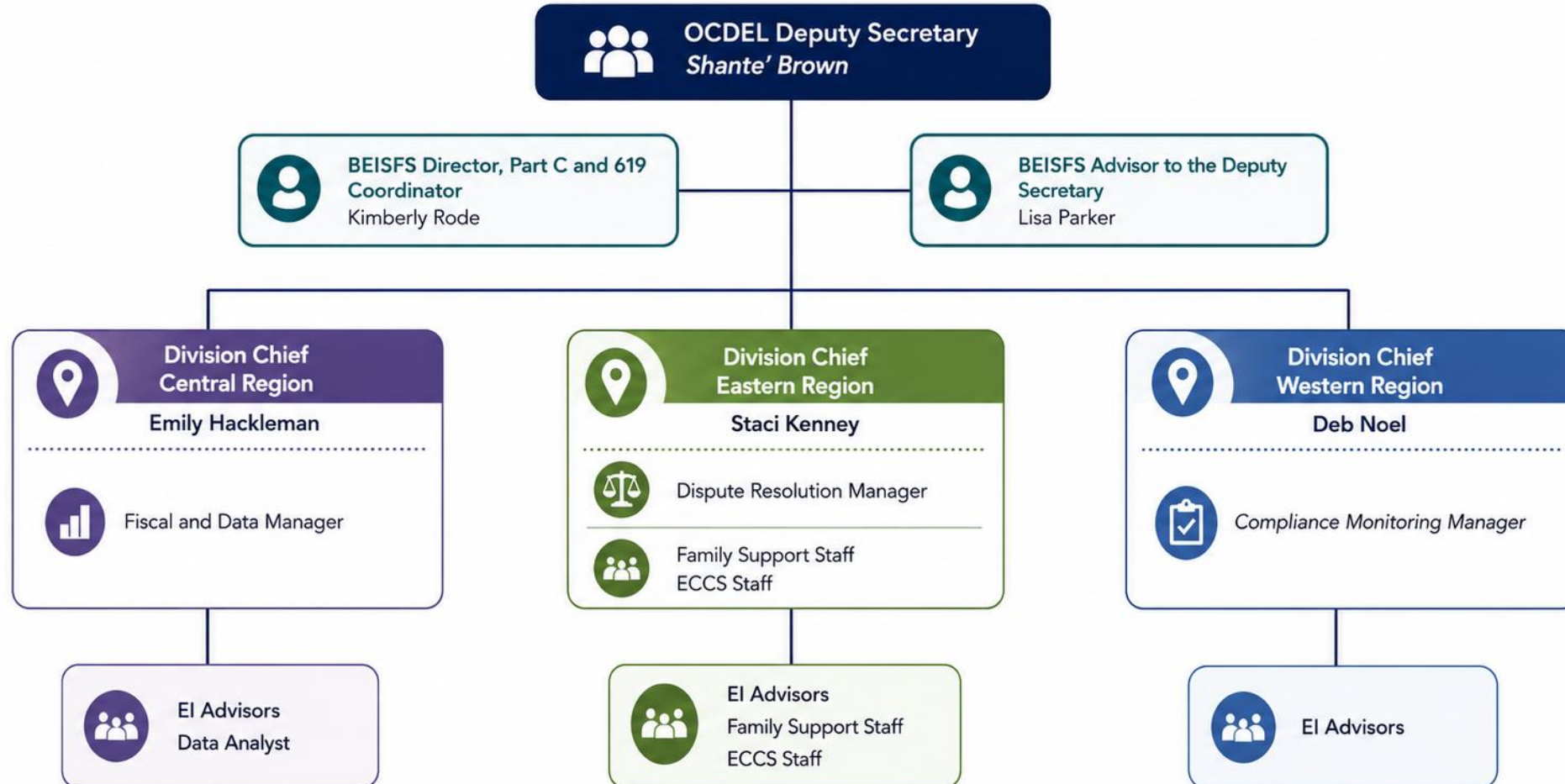
DR. KIM RODE,
DIRECTOR
BUREAU OF EARLY
INTERVENTION SERVICES AND
FAMILY SUPPORT (BEISFS)

Leadership, Structure & Business Partners



BEISFS Organizational Structure

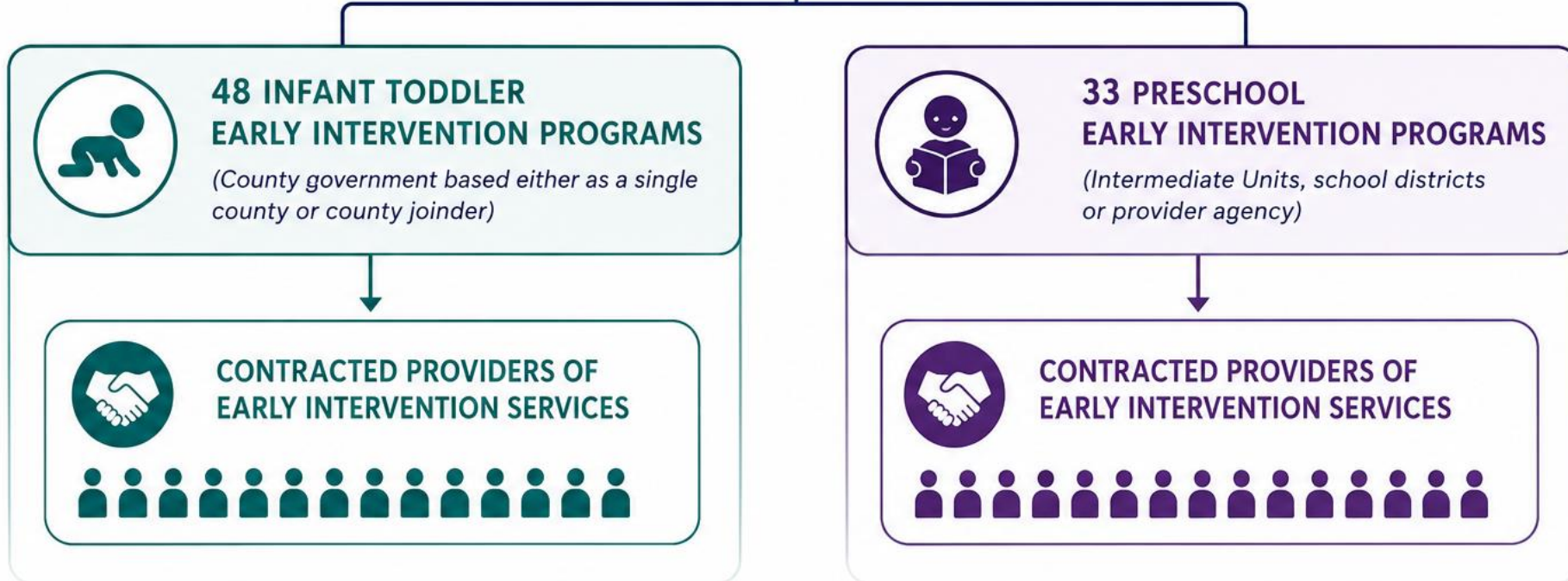
Office of Child Development and Early Learning (OCDEL)
Bureau of Early Intervention Services and Family Supports (BEISFS)



EARLY INTERVENTION PROGRAM ADMINISTRATION



BUREAU OF EARLY INTERVENTION SERVICES AND FAMILY SUPPORTS (BEISFS)



BEISFS oversees and supports a statewide system of early intervention programs and contracted providers to ensure high-quality services for infants, toddlers, and preschool-aged children with developmental delays and their families.

INFANT TODDLER EARLY INTERVENTION PROGRAM ADMINISTRATION

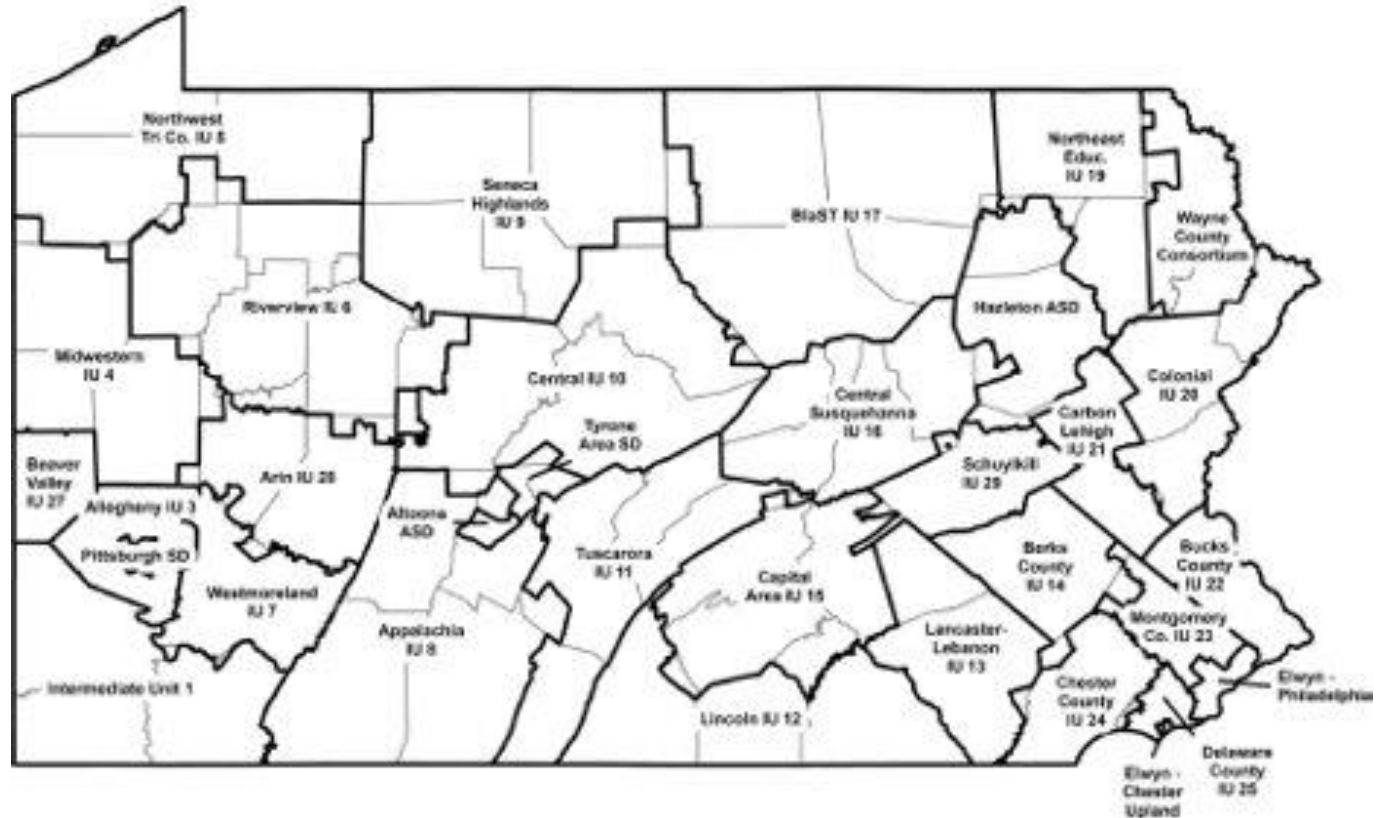
- Serves children birth to age 3
- County based
- 48 counties/county joiners
- Dedicated service coordination system
- Approximately 500 contracted providers
- Approximately 4,700 Early Interventionists



PRESCHOOL EARLY INTERVENTION PROGRAM ADMINISTRATION

- Serves Children 3 to school age
- 26 Intermediate Units (IUs)
- 5 School Districts
- 1(one) Private provider covering two areas

Preschool EI Programs



REQUIRED EARLY INTERVENTION TIMELINES AND PROCESSES

For Preschool Early Intervention, timelines are tied to Regulatory Requirements;

- 60 calendar days from the date the Permission to Evaluate (PTE) is signed to complete the evaluation process
- 30 calendar days from the evaluation report to hold the IEP meeting
- 14 calendar days for services to begin following the IEP meeting

INTEGRATED MONITORING AND SUSTAINING COMPLIANCE AND IMPROVEMENT

Annual
Determinations

Verification –
4-year cycle

Monthly and
Quarterly Data
Reviews

Validations

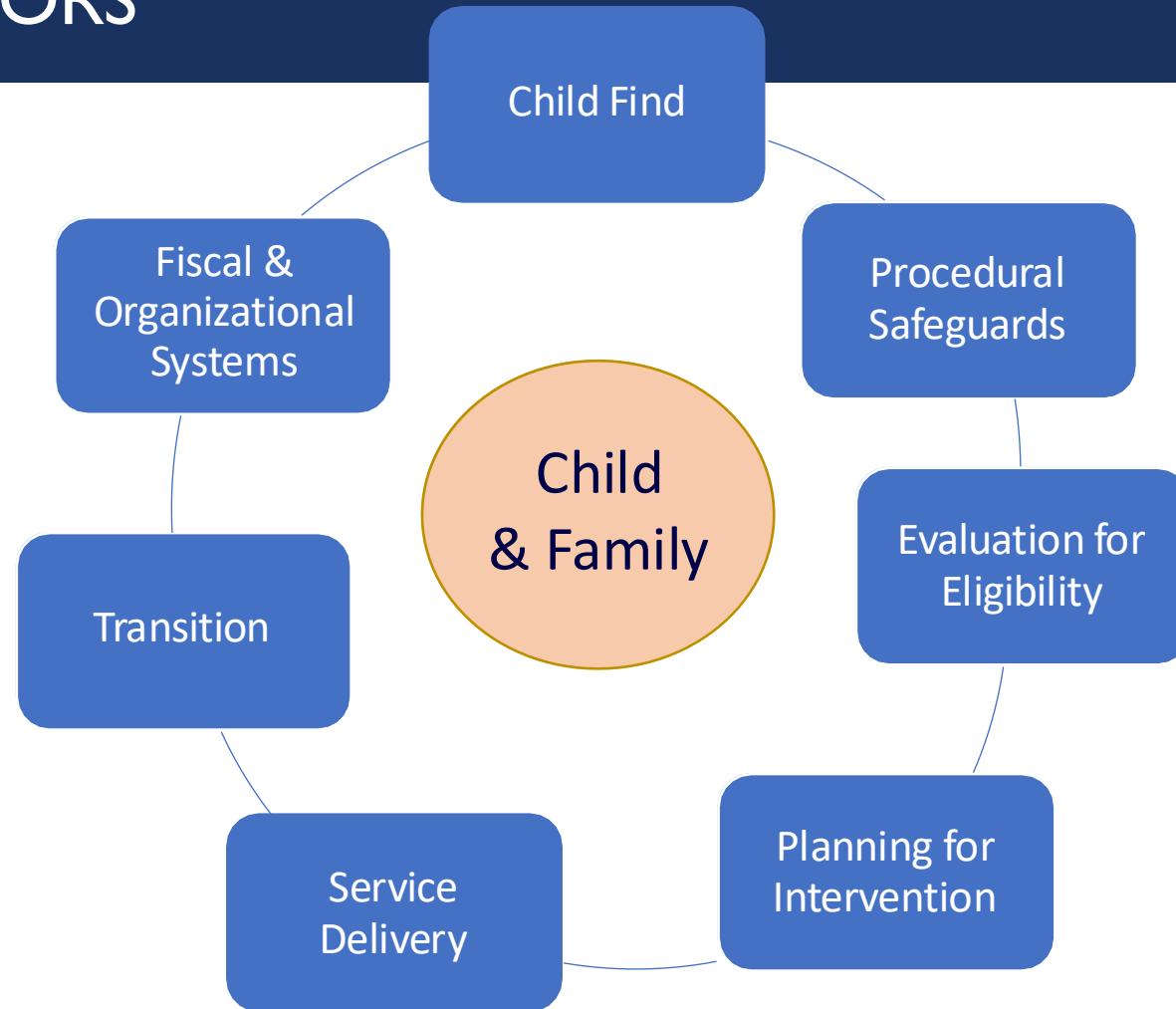
Local Program
Monitoring

ANNUAL DETERMINATION PROCESS

- Issued January of Each Year
- Outcome Areas
- 33 Data Elements for Infant Toddler programs
- 30 Data Elements for Preschool Programs
- SPP Indicators and PA Quality and Compliance Measure



VERIFICATION INDICATORS



QUALITY IMPROVEMENT AND CORRECTIVE ACTION



ANNOUNCEMENT EI-25-02 (COMPLAINT PROCEDURES)

Complaint subjects include, but are not limited to, the following:

- Timelines were not met
- Disagreement with an eligibility determination
- Failure to provide a free appropriate public education (FAPE)
- Failure to provide services included in an IFSP or IEP
- Failure to implement a mediation agreement or due process hearing decision

Review Announcement for:

- Complaint System Procedures
- Corrective Action Process

DISPUTE RESOLUTION

- Family Concern Line: (717) 346-9320
- File a Written Complaint: [PaTTAN - Early Intervention Complaint Form](#)
- IFSP/ IEP Facilitation: [Home - Office for Dispute Resolution](#)
- Mediation: [Home - Office for Dispute Resolution](#)
- Due Process Hearing: [Home - Office for Dispute Resolution](#)

First Steps in Problem Solving

Questions or concerns about Early Intervention (EI) programs and services should first be addressed by contacting your service coordinator (infant toddler EI program) or your EI representative (preschool EI program). You are encouraged to meet with staff at your EI program as a first step in resolving concerns.

This is likely to result in a more timely resolution. Any change that results from the meeting will be documented on the Individualized Family Service Plan (IFSP) or Individualized Education Program (IEP). If you ask for a meeting to talk about your concerns, the meeting must be held within seven days of your request.

What if parents still have concerns?

You have five choices available to you if concerns persist. Any of these choices may be used at any time.

concerns without taking sides. Mediators don't make "decisions," but help parties come to an agreement. Mediation is offered at no cost, is informal, and happens quickly.

You can get more information about mediation by contacting the Office for Dispute Resolution at <https://odr-pa.org/> or 1-800-222-3353.

1) Contact the Bureau of Early Intervention Services and Family Supports

You may contact the Bureau of Early Intervention Services and Family Supports (BEISFS) by calling 717-346-9320. BEISFS can assist in resolving the concern before a more formal written complaint is filed.

A BEISFS Advisor will contact your child's EI program to determine if there can be an immediate resolution. If no immediate resolution is available, you can file a written complaint.

5) Due Process Hearing

You may request a due process hearing, a more formal process for resolving disagreements about EI services, such as the choice of service, how often a service is provided, or where a service takes place. These are formal hearings at which all sides can present witnesses, including experts.

There are some differences in due process for families with infants and toddlers, and those with preschool age children.

Parents with infants and toddlers under three years of age

You may request a hearing, and the hearing officer will set a date and send a notice to you. If there is a problem with the date, the hearing can be rescheduled. The hearing must be held, and a decision reached within 30 days.

Parents with preschool children three to five years of age

If you request a hearing, you and your preschool EI representative will be required to meet before a hearing takes place to resolve disagreements at the local level through a resolution meeting. Both parties can agree to waive the resolution meeting in writing, or they may agree to try mediation. If the preschool program does not hold a local resolution meeting within 15 calendar days, you may ask the hearing officer to move forward with the due process hearing. The hearing must be held, and a decision reached within 45 days.

For more information on due process hearings, you can contact your preschool EI representative or call the Office for Dispute Resolution at 1-800-222-3353 or visit <https://odr-pa.org/>.

*An EI representative could be your EI teacher, therapist, or service coordinator.

2) File a Written Complaint

You may file a written complaint to resolve concerns if you believe the EI program hasn't followed proper steps in the EI process.

BEISFS will investigate the complaint within 60 days.

If a concern is identified, a plan of correction will be developed within 30 days after the investigation.

3) IFSP/IEP Facilitation

A state process, not required under the Individuals with Disabilities Education Act. You may ask for IFSP/IEP facilitation, a voluntary process that can be used when parents and EI staff agree that a neutral person would help to achieve a successful IFSP/IEP meeting. This is a less formal way to resolve disagreements than more formal proceedings such as due process. **You can get more information from your service coordinator or preschool EI representative or by contacting the Office for Dispute Resolution at 1-800-222-3353 or <https://odr-pa.org/>.**

4) Mediation

You may use mediation when there is a disagreement about a child's evaluation or services on the IFSP or IEP, such as the choice of a service, how often a service is provided, or where a service takes place. In mediation, everyone agrees to work together with a mediator, a person trained to help resolve

HOW TO STAY CONNECTED

- Subscribe to the [PA Early Ed. News](#)
- [Early Intervention Technical Assistance Portal](#)
- [State Interagency Coordinating Council \(SICC\)](#) and/or [Local Interagency Coordinating Councils \(LICC\)](#)
- [Special Education Advisory Panel \(SEAP\)](#)
- [State Advisory Council for Early Childhood Education and Care \(SAC\)](#)
 - 5 supporting subcommittees (application announcement June/July)
 - Quarterly meetings are open to the public with dedicated Public Participation Time



Communication with EI Leader- Professionals and Families



Pennsylvania Early Intervention Technical Assistance
Portal to Practice

Early Intervention Portal to Practice

March 17, 2025

If you're looking to better support children's social emotional development, look no further! Whether you have a few minutes to review a few new tools or enough time to take a longer course, there are resources to support your work on the [EITA Portal](#).

What's New?

Resources

Celebrate Social Emotional Learning in March with OCDEL's newly updated Social Emotional Resources! Discover tools and strategies to support children's emotional well-being and development. Check out even more resources to support your work on the Social Emotional page including the Federal Resources to Support Social Emotional Development of Infants and Toddlers and resources provided by the Collaborative for Academic, Social, and Emotional Learning (CASEL).

[Check out the Social Emotional page of the EITA Portal for these resources and more.](#)

WHAT WE ARE HEARING FROM CHILD CARE PROVIDERS

Across Pennsylvania, providers consistently raise concerns about:

- Difficulty accessing behavioral health supports for young children
- Delays between referrals and service delivery
- Unclear coordination between EI, BH, schools, and ECE programs
- Providers feeling “stuck in the middle” navigating systems
- Inconsistency across counties or provider agencies
- Communication breakdowns
- Challenges partnering with larger systems and providers
- Workforce shortages impacting timeliness and continuity



WHAT IS OCDEL WORKING ON?

Strengthening Cross-System Coordination

- Increasing collaboration between EI, behavioral health, education, and early childhood systems
- Exploring better pathways for communication and referrals

Improving Communication & Transparency

- Expanding awareness of complaint and escalation processes
- Encouraging earlier problem-solving before issues worsen
- Building stronger feedback loops with providers and families

Supporting Local Program Leadership

- Increased attention to consistency during leadership transitions
- State-level support and monitoring for local programs

Family & Provider Voice

- Expanding opportunities for stakeholder engagement
- Using provider and family feedback to identify patterns and system gaps

Workforce & Access Challenges

- Monitoring evaluation and service timelines statewide
- Working with partners on workforce sustainability strategies

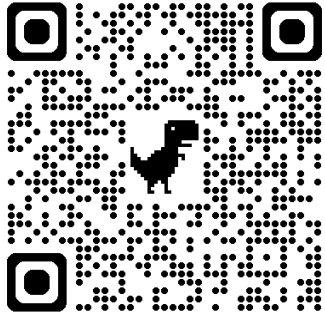
THANK
YOU!

The text 'THANK YOU!' is rendered in a playful, hand-drawn style. 'THANK' is in dark blue, and 'YOU!' is in mustard yellow. The words are enclosed in a white, cloud-like outline with a dashed border. Several decorative elements are scattered around the text: a yellow four-pointed star at the top, a yellow dot above the 'A', a blue four-pointed star to the left of the 'Y', a blue dot below the 'A', a yellow dot to the right of the 'A', and a blue dot below the 'U'. The background features a horizontal line at the top, divided into three segments of dark blue, light blue, and grey.

RESOURCES

SUPPORTS FOR PROVIDERS TO HELP GET CHILDREN'S NEEDS MET

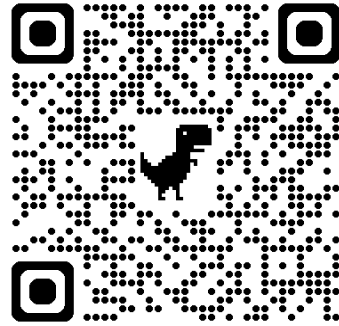
EITA



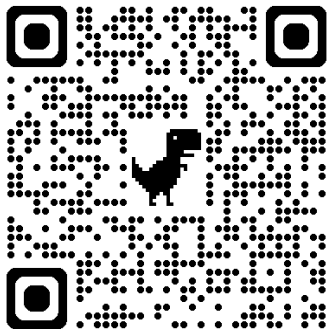
RRT



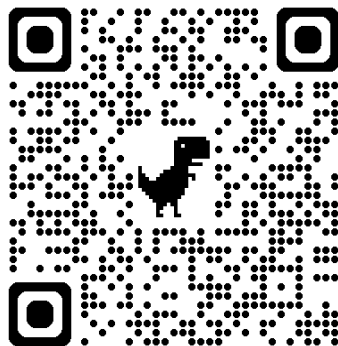
KenCrest SWIFT



CARA's Kit



IECMH



**OCDEL Early
Intervention Formal
Complaint Form**

[PaTTAN - Early Intervention
Complaint Form](#)

[PaTTAN - Early Intervention
Complaint Form- Spanish](#)

Or call 717-346-9320 to file
your complaint verbally



Community Partners

COMMUNITY PARTNERS RESOURCES



MONTGOMERY
COUNTY
PENNSYLVANIA

Montgomery County

**Maternal and
Child Health
Program**



MONTGOMERY
COUNTY
PENNSYLVANIA

Health and
Human Services

**Office of Public
Health**

Health and Human Services

- **Mission - Health and Human Services team members are leading the way with people and organizations across our county to make a positive difference in the lives of those we serve.**
- **Vision - All those who live, work, and play in Montgomery County lead healthy, safe, and connected lives.**

Maternal and Child Health Program

- **Centralized Referral – any pregnant or caregiver of a young child is eligible for services.**
 - [Form Center • PH-Centralized Referral Form for Montco Matern](#)
- **ASPIRE Program – Asthma Home Visiting Program**
- **Lead Outreach and Education**

Support for Expectant Moms and Dads

Contact us if you need support or want to make a referral.

All programs are free regardless of insurance or immigration legal status.

MECC has collaborated with local agencies to provide free programs for pregnant mothers and support for new fathers.



**MONTGOMERY
COUNTY, PA**
DEPARTMENT OF
HEALTH & HUMAN SERVICES



**MONTGOMERY
COUNTY**
PENNSYLVANIA

MontcoHomeVisiting@montgomerycountypa.gov
Phone: 1-888-404-0620
Fax: 610-278-5167



SCAN ME

TAKE CONTROL. GET STARTED TODAY!

The Home Visitor Program offers
FREE assessments by our trained team.



asthma@montgomerycountypa.gov



A.S.P.I.R.E.



Reduce Triggers of Asthma in Your Home

The A.S.P.I.R.E. Home Visitor Program helps parents make their homes safer for children with asthma. Families who join the program often see fewer trips to the emergency room, hospital stays, and missed school days.

With this program, you can learn how to:

- Use asthma medicine correctly with one-on-one education
- Cut down asthma triggers at home, like dust mites, pet dander, smoke, and strong odors
- Improve your indoor air by keeping the air flowing and the humidity low

You may also get:

- A one-time offer of free cleaning supplies
- Free home repairs for renters and homeowners who qualify

TAKE CONTROL. GET STARTED TODAY!

Save the Date – June 11th!



Mothers Alive 2026

Strengthening Families Through Economic Opportunity and Care

Thursday, June 11 | 8:30 a.m. - 3 p.m.

SAVE THE DATE



**MONTGOMERY
COUNTY, PA**
DEPARTMENT OF
HEALTH & HUMAN SERVICES



**MONTGOMERY
COUNTY**
PENNSYLVANIA



MONTGOMERY
COUNTY
PENNSYLVANIA

Please Reach
out:

Shannon.wise@montgomerycountypa.gov



Champions for Early Education



TIEISHA YOUNG

TIEISHA.YOUNG@FIRSTUP.ORG

WHAT IS LEARN AND EARN?

First Up has partnered with Public Health Management Corporation's Professional Development Organization (PHMC PDO) to provide comprehensive support to programs who have teachers currently or are interested in furthering their education through degree attainment.

This program is called ****Learn and Earn Career Pathway Program***



OUR PARTNERS

■ Current Partners

- Community College of Philadelphia
- Delaware County Community College
- Arcadia University

■ Future Partner

- Northampton Community College



LEARN AND EARN RESULTS

- ❖ Materials Stipends
- ❖ Coaching Stipends
- ❖ Professional Development Opportunities
- ❖ Graduates



INTERESTED?!?

- -If you have professionals who are interested in furthering their education please visit the Learn & Earn homepage as well as PHMC's PDO website for funding application.
- Learn and Earn Career Pathway Program - First Up
 - PHMC PDO



**OCDEL, DHS
& ELRC
Announcements**

NETTA RADZINSKI – OCDEL
C-JRADZINS@PA.GOV

ASIA SHEPPARD & JAMILA DASHIELL,
DHS
ASSHEPPARD@PA.GOV
JDASHIELL@PA.GOV

MANDY MCHALE- ELRC'S
AMCHALE@PHMC.ORG



Pennsylvania
**Office of Child Development
and Early Learning**

NETTA RADZINSKI
C-JRADZINS@PA.GOV

ASIA SHEPPARD

ASSHEPPARD@PA.GOV

JAMILA DASHIELL

JDASHIELL@PA.GOV



pennsylvania
DEPARTMENT OF HUMAN SERVICES

[Child Care Regulations](#) | [Department of Human Services](#) | [Commonwealth of Pennsylvania](#)

- Regulations- 55 PA Code Chapter 20, 3270, 3280, 3290
- Universal documents and forms
 - Provider survey
 - Affirmation Statement
 - Pre-Service Training Inspection Checklist
 - Water Activity Inspection Checklist
- Certification Inspection Instrument (CII) & Worksheets
 - Child Care Center
 - Group Child Care Home
 - Family Child Care Home
 - School Age Child Care
- Provider Tip Sheets
 - File Requirements for Facility Persons in a Certified Child Care Facility
 - Staff Data Worksheet Tip Sheet
- Webinar: Launch of the New Certification Tool: CII

[Early Learning Main](#) | [Department of Human Services](#) | [Commonwealth of Pennsylvania](#)

- Vodcasts

Universal Documents and Forms

Provider Survey

Instrumento de inspección de certificación (renovación) Encuesta a proveedores de cuidado infantil

This document helps certification representatives prepare for renewal visits. It can be sent out by program administrators in advance so representatives can have it prepared.

Affirmation Statement

Declaraciones de Conformidad del Establecimiento de Proveedores de Cuidado Infantil

This document replaces the former set of individual disclosure statements related to swimming, firearms, and consumer product safety.

Pre-Service Training Inspection Checklist

Lista de verificación de capacitación previa al servicio

This document is used by Certification Representatives to document your compliance relating to staff records.

Child Care Center Forms

Certification Inspection Instrument

- [Child Center Certification Inspection Instrument](#)
- [Instrumento de inspección de certificación de centros de cuidado infantil \(renovación\)](#)
- [Center Initial Inspection Checklist — No Children in Care](#)
- [Center Initial Inspection Instrument — No Children in Care](#)
- [School Age Child Care Center in a School Building Initial Inspection Checklist](#)
- [School Age Child Care Center Not in a School Building Initial Inspection Checklist — No Children in Care](#)
- [School Age Child Care Center Initial Inspection Instrument — No Childre in Care](#)
- [Child Care Center Unannounced Monitoring Inspection Instrument](#)

Worksheets

- [Child Care Staff Data Center Renewal Worksheet](#)
- [Hoja de trabajo 1: instrumento de inspección para la certificación de centros de cuidado infantil](#)
- [Hoja de datos del personal de cuidado infantil \(renovación\)](#)
- [Child Records Center Renewal Worksheet](#)
- [Instrumento de inspección de certificación de centros de cuidado infantil \(renovación\) ficha 2](#)
- [Child Health Report Center Renewal Worksheet](#) - *Worksheet 1, 2, and 3 help you monitor your own compliance related to critical staff and child records. Certification Representatives use these worksheets to document your compliance related to child and staff records.*

Group Child Care Home Forms

Certification Inspection Instrument

- [Group Child Care Certification Inspection Instrument](#)
- [Instrumento de Inspección de Certificación del Hogar de Cuidado Infantil Grupal \(Renovación\)](#)
- [Group Child Care Home Initial Inspection Checklist — No Children in Care](#)
- [Group Child Care Home Initial Inspection Instrument — No Children in Care](#)

- [School Age Group Child Care Home Not in a School Building Initial Inspection Checklist — No Children in Care](#)
- [School Age Group Child Care Home Not in a School Building Initial Inspection Instrument — No Children in Care](#)
- [Group Child Care Home Unannounced Monitoring Inspection Instrument](#)

Worksheets

- [Group Child Care Staff Data Worksheet](#)
- [Group Child Care Records Worksheet](#)

- [Instrumento de Inspección de Certificación del Hogar de Cuidado Infantil Grupal \(Renovación\) Hoja de Trabajo 2 - Registros infantiles](#)
- [Group Child Care Health Report Worksheet](#)

Family Child Care Home Forms

Certification Inspection Instrument

- [Family Child Care Home Certification Instrument](#)
- [Instrumento de Inspección de Certificación del Hogar de Cuidado Infantil Familiar \(Renovación\)](#)
- [Family Child Care Home Initial Inspection Checklist — No Children in Care](#)
- [Family Child Care Home Initial Inspection Instrument — No Children in Care](#)
- [Family Child Care Home Unannounced Monitoring Inspection Instrument](#)

Worksheets

- [Family Child Care Home Data Worksheet](#)
- [Family Child Care Home Records Worksheet](#)
- [Instrumento de Inspección de Certificación del Hogar de Cuidado Infantil Familiar \(Renovación\) Hoja de Trabajo 2 - Registros infantiles](#)
- [Family Child Care Home Health Report Worksheet](#)

School-Aged Child Care Forms

Certification Inspection Instrument

- [Group School-Aged Child Care Certification Inspection Instrument](#)
- [School-Aged Child Care Certification Inspection Instrument](#)

- [School-Aged Child Care Center in a School Building Initial Inspection Checklist — No Children in Care](#)
- [School-Aged Child Care Center in a School Building Initial Inspection Instrument — No Children in Care](#)
- [School-Aged Group Child Care Program in a School Building Initial Inspection Checklist — No Children in Care](#)
- [School-Aged Group Child Care Program in a School Building Initial Inspection Instrument — No Children in Care](#)

Provider Tip Sheets

- January 2026 File Requirements for Facility Person(s) in a Certified Child Care Facility
- April 2026 - Child Care Center Staff Data Worksheet Tip Sheet
- April 2026 - Family Child Care Home Staff Data Worksheet Tip Sheet
- April 2026 - Group Child Care Home Staff Data Worksheet Tip Sheet



MANDY MCHALE, MPH
ELRC 15
RESOURCE AND REFERRAL
COORDINATOR

ELRC REGION 15, 16, 17, 18, 19
UPDATES

ELRC 15 – DELAWARE COUNTY UPDATES

LOCATION: 2098 WEST CHESTER PIKE SUITE 102 **TOLL FREE:** 888-535-2217 **MAIN:** 610-480-3191

- ELRC 15 welcomes Talia Morris to the team of Quality Coaches.
- Next Local Interagency Coordinating Council meeting is scheduled for **JUNE 2nd via Zoom (9am)** –Join the collaboration as we discuss opportunities to best meet the needs of children and families throughout Delaware County. Email ELRC15DELCO@PHMC.org for more details.
- Targeted Coaching Consultant available for Health and Safety and Inclusive Practices contact your Quality Coach for more information.

- **ELRC 15 Contact Information:**
 - ✓ Ongoing Family Case Needs: ELRC15Family@phmc.org
 - ✓ Provider Needs: ELRC15Provider@phmc.org
 - ✓ Quality Supports: ELRC15STARS@phmc.org
 - ✓ New APPLICATION submissions and updates: ELRC15Intake@phmc.org

ELRC 17 – MONTGOMERY COUNTY UPDATES

- ELRC 17 is hosting Parent Café Events at Child Care Providers in Montgomery County. This is a great Family Engagement Opportunity. Reach out to your Quality Coach to schedule an event at your center.
- ELRC 17 next Health & Safety Regional Taskforce Meeting will be on Wednesday, May 20th from 1-2:30pm. This meeting is held in a hybrid format. All Community Partners, and Child Care Providers in Montgomery County are encouraged to attend.
- ELRC 17 next Local Leadership Council Meeting will be on Wednesday, July 8th, from 1-3:00pm. This meeting is held in a hybrid format. All Community Partners, and Child Care Providers in Montgomery County are encouraged to attend.
- ELRC 17 Monthly Newsletter is sent via our Quality Coaches each month. Our newsletter is posted on our website: www.montcopa.org/elrc

ELRC 18 – PHILADELPHIA COUNTY

WWW.ELRC-PHMC.ORG/18

Following CCSRR Payment Guidelines

- In receiving payments from the ELRC for Child Care Staff Retention and Recruitment Awards, providers must adhere to spending requirements outlined, including:
- Providers have **45 days from receipt of payment from the ELRC** to issue **Retention** bonuses to approved staff.
- **Recruitment** bonuses must be issued to newly hired staff (qualified staff members hired after the CCSRR submission date) **no later than 6/30/26**.
- 6/30/26 is the last day for providers to spend or return funds.
- Learn more about preparing for monitoring of grant expenditures [here](#) under monitoring information, paying particular attention to **requirements of processing through payroll and maintaining documentation**.

Reach out to ELRC18grant@phmc.org with any questions!

ELRC 18 – PHILADELPHIA COUNTY

WWW.ELRC-PHMC.ORG/18

Online Enrollment Transfer Request Form (and QR code)!

- As we transition to summer, we promote the use of the on-line [Enrollment Transfer Request form](#). **Families can initiate their enrollment request online, so please post and share the flyer!**
- To ensure their enrollment with you is completed through ELRC 18, they must meet the following requirements:
 - Have an open case with ELRC 18.
 - Their copay at their current care provider must be paid, in full, through the final day of care (not just the end of this week)
 - They can use the link below to request that ELRC 18 finalize enrollment with the selected summer care provider

ELRC 18 – PHILADELPHIA COUNTY

WWW.ELRC-PHMC.ORG/18

NEW! Quality Initiatives Dashboard

- ELRC 18 hopes to raise awareness of and access to the range of free resources available to Philadelphia providers seeking to improve and maintain high quality operations. The [Quality Initiatives Dashboard](#) will be maintained with current initiatives, posted on the ELRC website, and available through Quality Coaches. Quality Initiatives partners are committed to resources that match provider voice and preference!

Save the Dates-June Provider Network Meetings

- Meetings are scheduled for 6/15 10-11:30am, 6/17 1-2:30pm, and 6/25 6:30-8pm. Registration links will be shared via the ELRC Newsletter.

ELRC 19 – CHESTER COUNTY REMINDERS

Contact ELRC 19 for assistance or additional information

- **Free Health & Safety Targeted Coaching Available:** Provider requested support for onsite coaching to strengthen practices such as diapering, hand washing, sanitizing, etc. Additional topics include medication administration, diagnosis supports, contagious disease mitigation, etc. Contact your Quality Coach for more information and to request services.
- **Summer Kick off Resource Fair**– Save the date, June 2nd in person. Open house 11-2PM, light refreshments, raffle prizes and loads of resources!
- **Newsletter** - Subscribe to our newsletter by clicking on the subscription box on our website: <https://www.elrc-phmc.org/19>



THANK YOU!





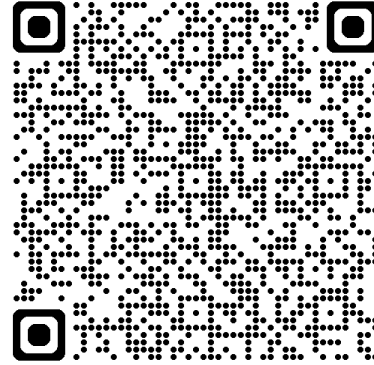
LET US
CELEBRATE
YOU!

SEPECC
JUNE 23RD

Please send your pictures to Sim Loh at
sim.loh@firstup.org
or
text at **(267) 403-8326**,
along with a **brief description** of each photo
by **June 16th**. Thank you!

- **1-Minute Exit Survey:**

<https://forms.cloud.microsoft/r/t0f9sXuTX0>



- **PQAS Hours Request Form:**

<https://forms.office.com/r/RfzSg97k7j>

- **Next Meeting:**

- June 23, 2026 at 12:30PM

- **Meeting Slides, Recording & Registration Links**

<https://www.firstup.org/advocacy/#sepecc>





Advancing quality early care
and education in Bucks, Chester,
Delaware, Montgomery and
Philadelphia Counties

SEPECC

2025-2026 SEPECC COMMITTEE VOLUNTEERS

Steering Committee

Zakiyyah Boone (Co-Chair)
Melanie Brennan (Co-Chair)
Ebony Baggett
Jackie Groetsch
Kia Douglass
Latonta Godboldt
Laverne Cheeseboro
Mary Graham
Melody Connell
Minnette Taylor
Sharon McClafferty
Shineal Hunter
Tracey Triolo

Advocacy Workgroup

Eleanor Levie
Laverne Cheeseboro
Lisa Iliopoulos
Mercedes Fleet Mount
Nicole Fetherman
Shineal Hunter
Shirlee Howe
Sim Loh

Social Media Workgroup

Eleanor Levie
Shar'ron Brown Carroll
Sim Loh

Advisory Council

Elizabeth Ozer
Khadijah Sabir
Maddy Malis
MaryKay Mahar
Norma Finkelstein
Pamela Haines